

QWT22-L WR-22

Features:
* Low VSWR

Applications:
* Transmitters
* Antennas
* Laboratory Test
* Impedance Matching

Electrical

Frequency: 32.9~50.1GHz
VSWR: 1.05 max.

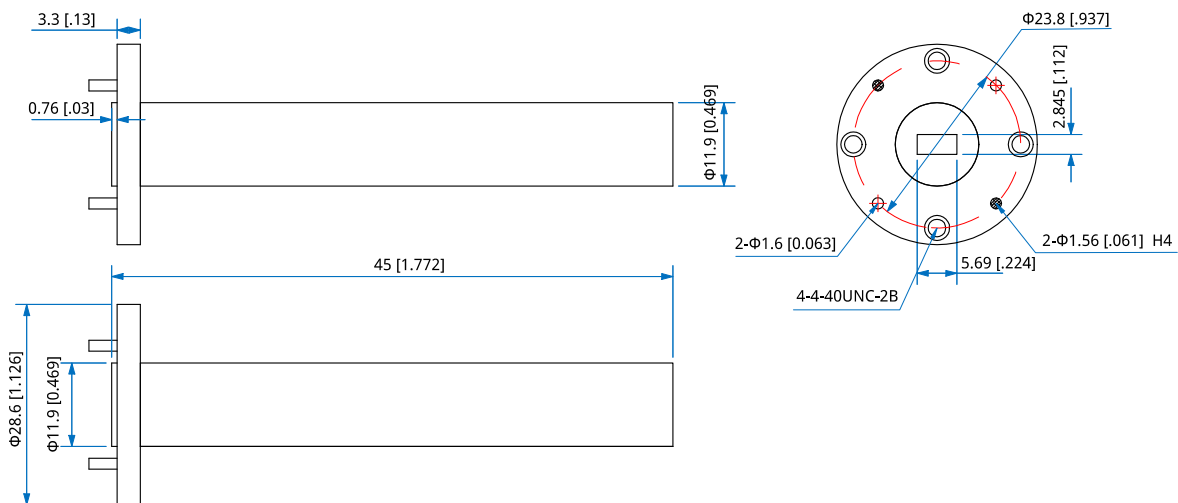
Mechanical

Waveguide Size: WR-22 (BJ400)
Flange: FUGP400

Environmental

Temperature: -55~+125°C

Outline Drawings



Outline A

Unit: mm [in]
Tolerance: $\pm 0.5\text{mm}$ [$\pm 0.02\text{in}$]

How To Order

QWT22-L-Y-Z

Y : Material

Z : Flange type

Material naming rules:

B: Brass (Outline A)

Flange naming rules:

5 - FUGP400 (Outline A)

Examples:

To order a low power waveguide termination, WR-22, low power, Brass, FUGP400, specify QWT22-L-B-5.

Customization is available upon request.